

MONTHLY MEMBERSHIP PROGRESS REPORT

LOCATION CALIFORNIA

District 4 C1

Results as of: 2/28/2022

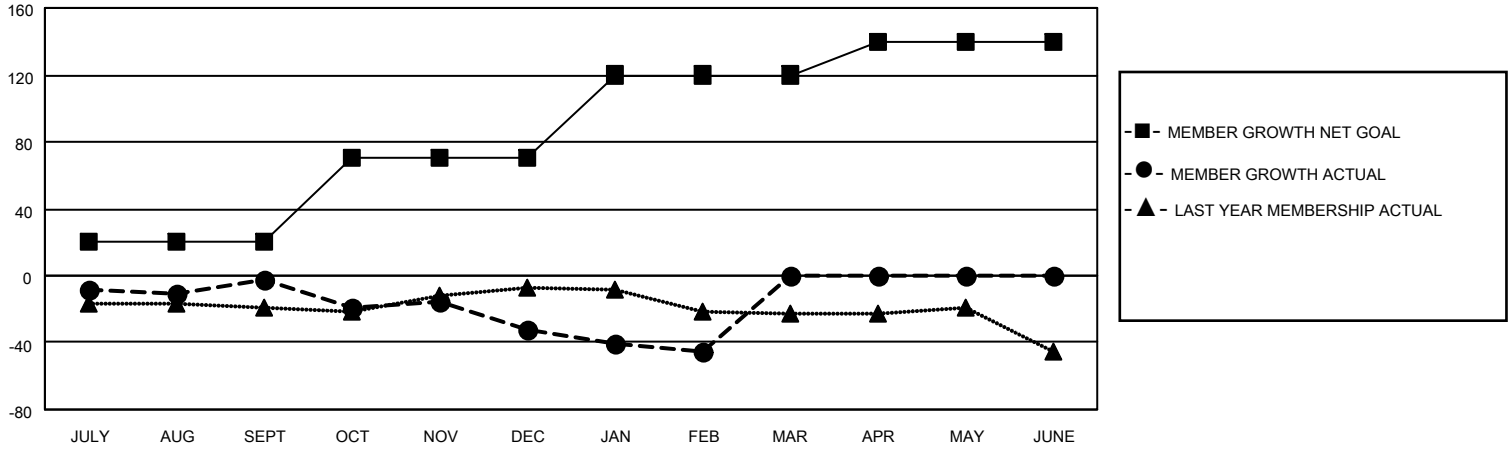
| Clubs | | | |
|-----------------------|---------------|-----------|---------------|
| RESULTS FOR 2021-2022 | | | |
| QUARTER | NEW CLUB GOAL | NEW CLUBS | DROPPED CLUBS |
| JULY/AUG/SEPT | 1 | 0 | 2 |
| OCT/NOV/DEC | 1 | 0 | 3 |
| JAN/FEB/MAR | 1 | 0 | 1 |
| APR/MAY/JUNE | 1 | 0 | 0 |

| Members | | | |
|-----------------------|------------------------|----------------------|--|
| RESULTS FOR 2021-2022 | | | |
| QUARTER | MEMBER GROWTH NET GOAL | MEMBER GROWTH ACTUAL | DROPPED MEMBERS ACTUAL (including transfers) |
| JULY/AUG/SEPT | 20 | 56 | 51 |
| OCT/NOV/DEC | 50 | 28 | 52 |
| JAN/FEB/MAR | 50 | 20 | 30 |
| APR/MAY/JUNE | 20 | 0 | 0 |

GOALS AND ACTUAL NEW CLUBS CUMULATIVE



GOALS AND ACTUAL MEMBERS CUMULATIVE



DROPPED CLUBS: 6

24 CLUBS OF 42 ADDED 1 OR MORE NEW MEMBERS

GENDER DISTRIBUTION

| | |
|----------------------|--------------|
| MALE | 591 (64.17%) |
| FEMALE | 330 (35.83%) |
| NON BINARY | 0 (0.00%) |
| PREFER NOT TO ANSWER | 0 (0.00%) |

DROPPED MEMBERS

[CLICK HERE FOR CUMULATIVE MEMBERSHIP DATA](#)

| | |
|----------------|------------|
| DECEASED | 11 |
| CLUB CANCELLED | 9 |
| OTHER | 113 |
| TOTAL | 133 |

| | |
|---------------------------------|-----|
| TOTAL FAMILY UNIT MEMBERS | 190 |
| FAMILY MEMBERS PAYING HALF DUES | 97 |